



29 January 2019

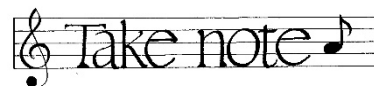
## **MANSFIELD STATE HIGH SCHOOL** **MUSIC NEWSLETTER - No. 2, 2019**



Dear Parents and Students,

Welcome back to 2019! We trust that you all had a relaxing holiday and are all ready for the year to come. D Block has been demolished to make room for a new building and the refurbishment of F block is almost complete. We hope to be moving into our new F Block home in the next couple of weeks.

### ♫ **Instrumental / Vocal and Guitar Lessons**



**Because of the new construction/refurbishment, lessons and ensembles will not begin until week 4 of term 1 – 18 February.**

**HOWEVER, Wind Orchestra will begin rehearsals in week 2 – Wednesday 6 February as they have a performance early in the term.**

The Music Parent Information Evening scheduled for Thursday 7 February will still go ahead. The evening will commence at 6.30pm and will give you opportunity to meet the Music teachers and ask any questions that you may have about Music here at Mansfield SHS.

Date Change – The student meeting (where Music Handbooks will be distributed to students) will now take place on Wednesday 13 February (week 3 instead of week 2). Students are to listen carefully to notices for further information about this meeting.

At this meeting, all students will receive a **timetable** for their group lessons that must be **glued** into their **student handbook (school diary)**. The timetable shows students' and staff exact lesson times for the term. Students should **highlight their name** and **group** on this timetable as well as their **lesson time** for the **entire term**. **Students** are reminded that attendance at lessons is compulsory unless they have an exam. We are **accountable** for their attendance and if they are **absent** we must have a **note from a parent** explaining that absence. SMS text messages and emails will soon begin to follow up on student absence or late arrival at rehearsals.

Students are also required to swipe their ID cards at the lower office or F Block when going **to and from** all lessons. New students waiting on ID cards simply give their name.

### ♫ **Ensemble rehearsals**

With the exception of Wind Orchestra, all ensembles will not begin until week 4 of term 1. Please remember that we are **accountable** for the students' whereabouts during a set rehearsal time. If students are **unable to attend** a rehearsal for any reason, if they are late or need to leave early, **we must have a note from a parent to explain this**. Morning rehearsals begin at 7.10am (arrive by 7.00am) and afternoon rehearsals begin at 3:00pm (arrive by 2:50). The only exception to these times is Chorale which begins at 7:00am (arrive at 6:50am).

### **Music Uniform**

Please take the time to check your Music performance uniform – trouser lengths especially. All students new to the program who participate in one of our ensembles should have been measured for a music performance uniform. Orders can be placed at the uniform shop. Uniforms are required by each ensembles' first performance in 2019. Don't forget the black dress socks (not short black sports socks).

### **SCHOOL SAFETY ZONE**

**Please do not enter the car park between 6.45am – 5.00pm for the safety of your children.** Please pull up in the appropriate places in the street and have the students use the footpaths and crossings. We understand the convenience of driving in but **safety must come first.**

## 🎵 2019 Concert Series

In 2019 we have planned a series of major concerts. Many other performance opportunities will also arise so please check your music Handbook for the entire year's concerts and the fortnightly school newsletter for updated information. It would be wonderful to see everyone at these events even if your child is not performing. Our concerts are like **sporting grand finals** it is **important** that **all ensemble members** are **present**.

Permission forms **will not** be issued for events which happen at school but students must supply a note 2 weeks in advance if they are unable to attend an event. We need help for the concerts - a helper's form is attached for the first concerts. Admission to all concerts except the Jazz Event is by donation.

Please note – there is only one 'Music in March' Concert this year.

Concert	Dates	Times	Venue	Ensembles Involved
<b>Music in March Concert</b>	Friday 22 March	6:30pm – 9:00pm	Assembly Hall	Wind Orchestra, Orchestra, Concert Band, Camerata, Capriccio, Celtic Strings, Percussion 1, Jazz Orchestra, Big Band, Senior Combo, Cantabile, Bellegrande,
<b>Music in May Concert 1</b>	Thursday 30 May	6:30pm – 9:00pm	Assembly Hall	Wind Orchestra, Symphonic Winds, Resonance Winds, Chamber Winds, Percussion 1, Jazz Orchestra, Senior Combo, Cantus, Camerata, Sinfonia, Celtic Strings, Cantabile, Stage Band, Cantrice
<b>Music in May Concert 2</b>	Friday 31 May	6:30pm – 9:00pm	Assembly Hall	Concert Band, Wind Ensemble, Orchestra, Big Band, Junior Combo, Percussion 2, Male Chorus, Chorale, Capriccio, Musaeus, Jazz Ensemble, String Orchestra, Bellegrande, Bellemente, Guitar Ensemble
<b>Creative Generation State Schools Onstage</b>	Friday 19 July & Saturday 20 July	To be advised	Brisbane Convention Centre	Selected students
<b>Jazz Event</b>	Friday 30 August	6:30pm – 9:30pm	Assembly Hall	Big Band, Jazz Orchestra, Jazz Ensemble, Stage Band, Jazz Combo & Junior Combo
<b>Mansfield Music 1</b>	Thursday 24 October	6:30pm – 9:00pm	Assembly Hall	Symphonic Winds, Wind Ensemble, Resonance Winds, Chamber Winds, Musaeus, String Orchestra, Jazz Ensemble, Stage Band, Junior Combo, Cantus, Cantrice, Male Chorus, Percussion 2, Bellemente. Pre-Entertainment – Guitar Ensemble
<b>Mansfield Music 2</b>	Friday 25 October	6:30pm – 9:00pm	Assembly Hall	Wind Orchestra, Concert Band, Orchestra, Camerata, Capriccio, Sinfonia, Big Band, Jazz Orchestra, Senior Combo, Chorale, Cantabile, Percussion 1, Celtic Strings, Bellegrande Pre-Entertainment – Wind Quintets

- **Stage Manager and Stage management team required** – the music department is looking for a team to run the backstage for our music concerts this year. If you can help complete the concert assistance form attached indicating willingness to assist or stage manage events or email Kathrine Jacobsen at: [kjaco15@eq.edu.au](mailto:kjaco15@eq.edu.au)

## 🎵 Music Camp 1

Camp forms for Music Camp 1 were included in the December bulk mail out and Music Camp 2 forms will be issued during Term 1. Please note – Camp 2 is from Friday 24 – Sunday 26 May (it was incorrectly written on some of the earlier documentation).

### **Details of Music Camp:-**

**Camp 1:** March 8 - 10 at Alexandra Park Conference Centre, Alexandra Headlands.

**Ensembles attending:** - Wind Orchestra, Concert Band, Orchestra, Camerata, Capriccio, Chorale & Cantabile.

Our camps have been an incredibly important part of our music program as they help to build our team work. They encourage social interaction, and most importantly they equal more than 3 to 4 weeks of rehearsal. Some of the activities we have planned include: Workshops with eminent musicians, team games, disco bowling, massed choir, talent quest, fancy dress, and tutorials with past students and professional musicians. These camps are a wonderful experience for all involved. Don't miss out! **Contact Mrs Jacobsen if you have any difficulties (financial or otherwise), because we don't want anyone to miss out.** Start saving now!

**Please note that unfortunately students will not be allowed to attend music camp if their subject fee payments are in arrears apart from those on payment plans.**

## ♫ MUSIC DIARY 2019

TERM 1	WEEK	(10 weeks)	
	2	Thursday, 7 February	Music Information Evening & uniform try-ons 6:30pm in the School Hall (uniform shop open from 4:30pm)
		Friday 8 February	Primary school <b>String</b> start-up day
	3	Wednesday 13 February	Instrumental Meeting in Hall – M/T & 2a (distribute timetables & handbooks)
	4	Monday 18 February	Instrumental Lessons and Ensemble Rehearsals begin
		Tuesday 19 February	Parent Support Group Meeting - 7.00pm Downstairs M Block
	5	Thursday 28 February	Open Day 1
	6	Thursday 7 March	Music Camp 1 Meeting in the hall (lunch time 4/4 day)
		Friday 8 March – Sunday 10 March	MUSIC CAMP 1 (WO, CB, CAM, CAP, ORCH, Chorale, Cantabile)
	7	Friday 8 March	Open Day 2
	8	Friday 22 March	<b>Music in March Concert – 6:30pm</b>
	9	Wednesday 27 March	Year 11 Music Performance Evening - 6:30pm
TERM 2		(10 weeks)	
	1	Wednesday 24 April	ANZAC Day Ceremony at school (Ensembles to be confirmed)
	2	Tuesday 30 April	Parent Support Group Meeting - 7.00pm M1
	3	Wednesday 8 May	12 Music Performance Evening – 6:30pm
		Thursday 9 May TBC	Music Audition Day – Accelerando & out of catchment
	5	Thursday 23 May	Music Camp 2 Meeting in the Hall at lunch
		Friday 24 May – Sunday 26 May	MUSIC CAMP 2 (SW, WE, RW, MUS, SF, MC, Cantus)
	6	Thursday 30 May	<b>Choral Fanfare heat at school (all choirs)</b>
		Thursday 30 May	<b>Music in May Concert 1 – 6:30pm</b>
		Friday 31 May	<b>Music in May Concert 2 – 6:30pm</b>
	7	Wednesday 5 June	Year 12 Music Extension concert 6:30pm – Music Studio
	10	Thursday 13 June	Choral Fanfare Regional Final Old Museum (if an ensemble qualifies)
TERM 3		(10 weeks)	
	1	Monday 15 – Thursday 18 July	Creative Generation State Schools Onstage Production week
		Friday 19 & Saturday 20 July	CG performances
	2	Tuesday 23 July	Parent Support Group Meeting– 7.00pm M1
	4	Thursday 8 August	Battle of the Bands Heat 1
		Friday 9 August	Battle of the Bands Heat 2
		Friday 9 August	Open Day 3 TBC
	6	Friday 23 – Saturday 24 August	MUSIC CAMP 3 (SO, CW, Cantrice, Handbells, Percussion Groups)
	7	Friday 30 August	<b>Jazz Event – 6:30pm – 9:00pm approximately</b>
	10	Wednesday 18 & Thursday 19 Sept	Year 12 Music extension concert 6:30pm – Music Studio
TERM 4		(10 weeks)	
	2	Tuesday 15 October	Parent Support Group Meeting– 7.00pm M1
		October	Queensland Festival of Music (some ensembles)
	3	Thursday 24 October	<b>Mansfield Music 2018 Concert - Junior Ensembles Concert</b>
		Friday 25 October	<b>Mansfield Music 2018 Concert – Senior Ensembles Concert</b>
	6	Wednesday 13 November	Evening of Excellence
		Friday 15 November	Year 12 Graduation
	7	Tuesday 19 November	Parent Support Group Break-up
	8	Friday 29 November	Yrs. 10 & 11 Presentation Assembly/ Final day Yrs.10 & 11
	8,9	Thursday 28 November – Monday 2 December	Music Placement Audition Days for 2020
	10	Wednesday 11 December	Yrs. 7-9 Presentation Assemblies

\*\*Note: As the year progresses, further opportunities to perform often arise. Acceptance of these dates is considered in the overall commitment to school activities. Students will be given as much notice as possible of such additional commitments. Parents are asked to respond immediately if their student is unable to meet a particular additional even

🎵 **2019 Strings Jump Start Day (Camerata only)**

Each year our school hosts a Jump Start Day for beginner string players from the local primary schools. Students from Camerata are invited to attend this day as tutors instead of going to Swimming Carnival. Students interested in taking part in this event will need to provide a note giving permission to miss the Swimming Carnival to Mrs Stevenson in Week 1 2019, and will NOT need to pay for Swimming Carnival.

🎵 **Correspondence**

If you have a question regarding anything to do with the music program, please either write a note and put it in one of the music mail box or contact the Music dept. on [2059\\_music@eq.edu.au](mailto:2059_music@eq.edu.au) or Kathrine Jacobsen via email [kjaco15@eq.edu.au](mailto:kjaco15@eq.edu.au).

🎵 **Mansfield Musicworx Update**

Our private music school, Mansfield Musicworx is up and running again this year. The majority of the staff are Mansfield High past students. Just a reminder that Mansfield Musicworx caters for all ages, most instruments, Mansfield High and non- Mansfield High students and provides theory tuition right on the Mansfield High campus. Visit the website today for more information. [www.mansfieldmusicworx.com](http://www.mansfieldmusicworx.com).



*K. Jacobsen*

K Jacobsen  
(A/HOD – Music)

