



CANTEEN MENU

Download a copy at www.mansfieldshs.eq.edu.au

How to order
Hand in the completed order form, and your payment, to the canteen by 8.45am on the day. Please ask us about today's selection of meats, fruits, salads, etc.



Hot food

Beef pie	\$3.90
Beef potato pie	\$4.00
Sausage roll	\$3.30
Vegetarian lasagne	\$4.40
Chicken chilli tender	\$3.60
Toasted Turkish bread & sandwiches	\$4.00
Garlic bread	\$1.50
Chicken burger	\$3.30
Parmigiana chicken burger	\$4.00
Falafel burger with avocado	\$4.00



Sandwiches/rolls

Salad	\$3.40
Salad with a selection of meats	\$3.60
Egg & lettuce	\$3.10



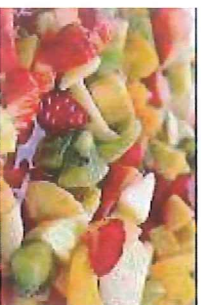
Cold wraps

Salad	\$3.40
Salad with meat	\$4.00
Chicken caesar	\$4.00
Chilli chicken	\$4.00



Hot wraps

Chicken fillet & salad (lunch only)	\$4.20
BBQ pork rib on a bun (lunch only)	\$3.30



Salads

Seasonal diced fruit salad	\$3.00
Fruit salad with yoghurt & muesli	\$3.00
Individual fruit pieces	\$.50
Garden salad (meat optional)	\$4.00
Chicken caesar salad	\$4.40
Greek salad	\$4.40



Breakfast

Raisin toast	\$.60
Toasted sandwiches	from \$2.00
Egg & bacon cup/roll	\$3.50
Banana bread	\$1.00
Fruit muffins	\$1.50
Anzac slice	\$1.00

Daily lunch specials

Monday – Mexican olé

Mexican chicken burger with guacamole, salsa, onion	\$4.00
Spicy nachos - corn chips, salsa, sour cream, cheese	\$4.00

Tuesday – pasta

Pasta with choice of various sauces e.g. vegetarian, creamy chicken, carbonara, Bolognese, beef lasagne	\$3.60
Hot roast chicken roll with shredded veggies in gravy	\$3.30

Wednesday – it's a wrap!

Greek lamb strips, Greek salad & yoghurt in a wholemeal wrap	\$4.20
BBQ beef patty burger with onions, lettuce, tomato & sauce	\$4.00



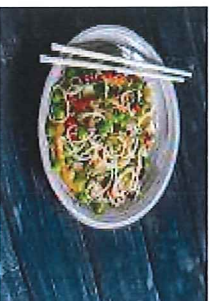
Thursday – Italian fiesta

Pizza ... (Hawaiian, vegetarian, or chicken)	\$4.00
Italian meatball sub with spicy tomato salsa & cheese	\$3.30



Friday – hot & spicy

Satay or butter chicken & rice	\$4.00
Noodle stir fry (with or without meat)	\$4.00
Grilled chicken burger, lettuce, tomato & aioli	\$4.00





CANTEEN ORDER FORM

Download a copy of this form and the current menu at www.mansfieldshs.eq.edu.au

How to order: Hand this form, and your payment, to the canteen by 8.45am on the day.

Item	Price (each)	Quantity	Subtotal
	\$		\$
	\$		\$
	\$		\$
	\$		\$
	\$		\$
	\$		\$
	\$		\$
	\$		\$
	\$		\$
TOTAL:			\$

Name:	
Year level:	
Date:	
Signature:	

DRINKS

JUICE

250ml Popper	\$1.30
350ml LOL Juice	\$2.20
350ml Classic Juice	\$2.00

MILK

300ml Plain Milk	\$1.10
600ml Plain Milk	\$1.80
600ml Lite Milk	\$1.90
250ml Pauls Breaka	\$1.70

WATER & ICED TEA

Iced Teas	\$2.80
600ml Water	\$1.00
1 Litre Water	\$2.20
500ml Focus Water	\$2.20

300ml Pauls Breaka	\$2.20
500ml Pauls Breaka	\$3.30
500ml Ice Break	\$3.10
600ml Oak Milks	\$3.10
500ml Rush Milks	\$3.10